

Introducing A brand new series of Super Performers



Data Sheet



champion series motors

FRAME SIZE 63-132M

SIEMENS

TEFC

3 Phase Squirrel Cage Induction Motors

Siemens CHAMPION Series Cage Motors are suitable for the most diverse applications. The Motors are available in the wide range from frame sizes 63 to 132M and they conform to EFF2 standards for efficiency. These motors have a high efficiency and high uptime. Consequently the productivity is higher and energy consumption lower. The motors have low life cycle costs, hence great saving!!!

Range

The motors are available from frame sizes 63 to 132M in 2 and 4 pole, and 71 to 132M in 6 pole design.

Voltage and Frequency

These motors are suitable for 415V $\pm 10\%$, 50Hz $\pm 5\%$, combined $\pm 10\%$, 3 phase AC supply.

Ambient Temperature

All motors in normal design are suitable for an ambient temperature up to 50°C.

Service Factor

All standard motors have a service factor of 1.1, when operating at rated supply conditions, ambient temperature up to 50°C and altitude up to 1000m, with temperature rise limited to class F limits.

Output

The rated output, as given in the selection and ordering data, is applicable for continuous operation as per IS:325 at 415V, 50Hz supply, ambient temperature up to 50°C and altitude upto 1000m above mean sea level.

The motors are provided with Class 'F' insulation, thermally utilised to Class 'B' limits, at rated output and rated voltage / frequency and with sinusoidal supply.

For use of standard motors at ambient temperatures exceeding 50°C and/or altitudes exceeding 1000m above mean sea level, the multiplication factors as listed in the table below must be applied on the rated output.

By utilising to Class 'F' limits, at rated voltage and frequency, the rated output can be derived from these motors even if the ambient temperature goes upto 55°C.

Overload Capacity

The motors are capable of withstanding 1.5 times the rated current at rated voltage and rated frequency for 2 minutes.

Insulation

Insulation system comprises dual coat enameled wires with a temperature class 200 and widely proven NOMEX based insulating material combined with alkyd-based varnish. The system ensures high

thermal, mechanical and electrical strength and also long life for the motors.

The insulation system offers excellent protection for the windings against corrosive gases, vapours, dust, oil and high humidity, as well as excellent resistance to the normal stresses of vibration.

Standards

The motors comply with all the relevant standards and specifications, particularly those given in table A.

Degree of Protection

Motors are designed for degree of protection IP 55 according to IS:4691

Frame design

The frames are of Cast Iron Grade FG150 as per IS:210. Terminal boxes of all the motors are of aluminium.

The motors can be offered in foot-mounted construction (IMB3, IMB6, IMB7, IMB8, IMV5, IMV6) or in flange mounted construction (IMB5, IMV1, IMV3). Foot cum flange construction B35, face-mounting construction with "C" type flange B14 and face mounting construction with "C" type flange along with foot B34 are also available.

All foot mounted motors in frames 63 to 132 are with integral mounting feet. The motors are suitable for horizontal as well as vertical mounting - universal type of construction.

Paint

The normal paint is in shade RAL 7037 (Dusty Grey). This paint is suitable for climate group 'worldwide' as per DIN IEC 60721 Part 2-1, and also for aggressive

atmospheres upto 1% acid and alkali concentration or permanent dampness in sheltered rooms.

Operation with VFDs

Operation of the motors with 'MASTER DRIVES' - Variable voltage, Variable frequency drives - is possible at voltages < 500V. It is also possible to use these motors with PWM drive converters with voltage rise times of $t_s > 0.1\mu s$ at the motor terminals.

Rating Plate

The 50Hz data, and 'CE' marking are provided on the rating plate of all motors. A typical rating plate will be as shown on the right.

As the efficiency values meet minimum norms of energy efficient motors as per IS : 12615-2004 for corresponding outputs, EFF2 logo will be provided for motors of 0.37kW and above.

Winding Connection

The motors rated up to 1.5kW will be 'Star' connected for 415V / 50Hz supply, and 6 leads will be brought out to the terminal box.

The motors rated 2.2kW and above will have 6 leads of the windings brought out in the terminal box and have to be connected in 'Delta' for 415V / 50Hz supply.

Cooling Fan and Fan cover

The external cooling fan is of anti-static, thermo-plastic and is suitable for both directions of rotation. The fan cover is manufactured from corrosion resistant sheet steel.

Altitude above sea level in m	Ambient temperature in °C		
	< 30	30 - 50	55
1000	1.07	1.00	0.96
1500	1.04	0.97	0.93
2000	1.00	0.94	0.90
2500	0.96	0.90	0.86
3000	0.92	0.86	0.82
3500	0.88	0.82	0.79
4000	0.82	0.77	0.74

Terminal box

The terminal boxes for all the motors are mounted on top. The particulars are given in the table below :-

Table B

Frame Size	T.B. Type	Terminal screw in mm	Max. permissible cond. Ross-section area in mm ²	Max. Current capacity in A	Cable entry diameter
63, 71, 80, 90	1 x B0 096	M4	1 x 4	16	1 x 19 (3/4") BSC
100, 112, 132	1 x B0 132	M5	2 x 6	20	2 x 25.4 (1") BSC

Note - a. No. of terminals - 6

b. Terminal box rotatable in steps of 90°

Bearing Design

Deep groove ball bearings, series 62 shielded on both the sides (ZZ), with bearing clearance "Normal" are provided on motors up to and including 112M frame. Frame size 132 will be provided with C3 clearance.

The grease used is lithium complex soap based, Exxon Mobil, UNIREX N3, to NLGI Class 3.

References for the bearings are given in the following table :-

Frame size	Bearing reference	
	DE	NDE
63	6201 ZZ	6201 ZZ
71	6202 ZZ	6202 ZZ
80	6204 ZZ	6204 ZZ
90	6205 ZZ	6205 ZZ
100	6206 ZZ	6206 ZZ
112	6206 ZZ	6206 ZZ
132	6208 ZZ	6208 ZZ

Balance and vibration severity

Balancing of the rotors is done with half key; no-load vibration level of motor would be "Normal" as per IS:12075.

Noise Level

No-load noise level for motors will be in accordance with IS:12065.



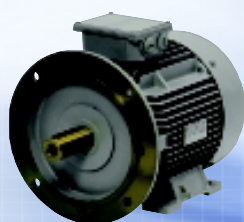
SIEMENS 3~Ind. Mot.  					
IEC 60034-1		IS:325	IS:12615	Amb.50°C	
%Eff 79.0%		IP55	Duty S1	Ins.Cl. F	
1LA0 096-4YA80			Frame 90L		
○ No. SDF/2000001			Wt. 20 kg ○		
Hz	V	kW	A	rpm	pf.
50	415Y	1.5	3.3	1415	0.81
± 5%	± 10%				
CHAMPION				MADE IN INDIA	

Table A

Title	IEC	Equivalent IS
General requirements for rotating electrical machines	IEC 60034-1 IEC 60085	IS 4722 IS 325
Fixing dimensions and assignment of rated outputs with IMB3 construction (foot mounted)	IEC 60072	IS 1231 (dimensions only)
Fixing dimensions and assignment of rated outputs with IMV1, IMB5, IMB10 and IMB14 construction (flange mounted)	IEC 60072 (dimensions only)	IS 2223 (dimensions only)
Types of construction of rotating electrical machines	IEC 60034-7	IS 2253
Degree of protection by enclosures for rotating electrical machinery	IEC 60034-5	IS 4691
Standard voltages	IEC 60038	IS 12360

Voltage Variation %	Frequency Variation %	Combined Voltage and Frequency Variation %	Permissible Output as % of Rated Value
± 6	± 3	± 9	100
± 10	± 5	± 10	100
± 12.5	± 5	± 12.5	95
± 15	± 5	± 15	90



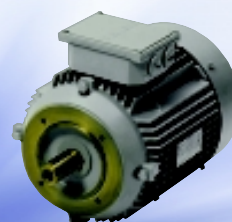
IMB35



IMB5



IMB34



IMB14



IMB3

TEFC 3 Phase cage motors



Frame size 63M to 132M, Degree of protection IP55, Insulation class F, suitable for 415V $\pm 10\%$, Frequency 50Hz $\pm 5\%$, Combined V and F variation $\pm 10\%$, Ambient temperature 50°C

Selection and Ordering data

Output kW	Frame	Motor Type	Rated Current at 415V, 50Hz A	Efficiency EFF 2 %	Power Factor	Rated Speed rpm	Rated Torque kgfm	Locked Rotor Current/ Rated Current	Locked Rotor Torque/ Rated Torque	Break down Torque/ Rated Torque	GD ² of Rotor kgm ²	Motor Weight kg
3000 rpm, 2 pole, 50 Hz												
0.18	63	# 1LAO 060-2YA..	0.47	63.0	0.84	2770	0.06	4.5	2.0	2.3	0.0010	5
0.25	63	# 1LAO 063-2YA...	0.67	63.0	0.82	2770	0.09	4.5	2.0	2.3	0.0010	6
0.37	71	# 1LAO 070-2YA...	0.91	67.0	0.84	2780	0.13	4.5	2.4	2.7	0.0016	8
0.55	71	# 1LAO 073-2YA...	1.3	72.0	0.83	2840	0.19	4.5	2.4	2.7	0.0022	9
0.75	80	# 1LAO 080-2YA...	1.7	73.0	0.85	2840	0.26	5.5	2.3	2.6	0.0038	13
1.1	80	# 1LAO 083-2YA...	2.3	77.0	0.87	2850	0.38	5.5	2.2	2.5	0.0049	14
1.5	90S	# 1LAO 090-2YA...	3.1	78.5	0.87	2860	0.51	6.0	2.7	3.0	0.0072	18
2.2	90L	1LAO 096-2YA...	4.3	81.0	0.88	2880	0.74	6.0	2.7	3.0	0.0093	21
3.7	100L	1LAO 107-2YA...	7.1	84.0	0.86	2900	1.2	5.5	2.1	2.3	0.0200	31
5.5	112M	1LAO 114-2YA...	10	85.7	0.89	2905	1.8	6.0	2.5	2.8	0.0373	41
7.5	132S	1LAO 131-2YA...	13.3	87.0	0.90	2910	2.5	6.0	2.0	2.3	0.0583	58
9.3	132M	1LAO 133-2YA...	16.4	87.7	0.90	2915	3.1	6.0	2.0	2.3	0.0716	65
1500 rpm, 4 pole, 50 Hz												
0.12	63	# 1LAO 060-4YA...	0.51	55.0	0.60	1340	0.09	3.5	1.9	2.1	0.0008	5
0.18	63	# 1LAO 063-4YA...	0.57	60.0	0.73	1370	0.13	3.5	1.9	2.1	0.0010	6
0.25	71	# 1LAO 070-4YA..	0.76	62.0	0.74	1360	0.18	3.5	1.9	2.1	0.0016	8
0.37	71	# 1LAO 073-4YA..	1.05	66.0	0.74	1380	0.26	3.5	1.9	2.1	0.0022	9
0.55	80	# 1LAO 080-4YA..	1.4	73.0	0.73	1410	0.38	4.3	2.0	2.2	0.0038	13
0.75	80	# 1LAO 083-4YA..	1.8	74.0	0.80	1415	0.52	4.5	2.0	2.1	0.0049	14
1.1	90S	# 1LAO 090-4YA..	2.5	76.5	0.81	1415	0.76	4.7	2.2	2.5	0.0072	18
1.5	90L	# 1LAO 096-4YA..	3.3	79.0	0.81	1415	1.0	4.7	2.2	2.5	0.0093	20
2.2	100L	1LAO 106-4YA..	4.4	82.0	0.85	1435	1.5	5.5	2.4	2.6	0.0182	28
3.0	100L	1LAO 107-4YA..	6	82.6	0.84	1435	2.0	5.5	2.4	2.6	0.0237	32
3.7	112M	1LAO 113-4YA..	7	85.0	0.86	1440	2.5	5.5	2.2	2.5	0.0380	39
5.5	132S	1LAO 130-4YA..	10.5	87.5	0.83	1450	3.7	5.5	2.3	2.5	0.0676	57
7.5	132M	1LAO 133-4YA..	14	87.5	0.85	1450	5.0	5.5	2.3	2.5	0.0912	64
1000 rpm, 6 pole, 50 Hz												
0.18	71	# 1LAO 070-6YA...	0.61	60.0	0.68	900	0.19	3.0	1.9	1.9	0.0033	8
0.25	71	# 1LAO 073-6YA..	0.8	64.0	0.68	900	0.27	3.0	1.9	1.9	0.0033	8
0.37	80	# 1LAO 080-6YA...	1.1	65.0	0.73	910	0.40	4.0	2.1	2.1	0.0049	12
0.55	80	# 1LAO 083-6YA..	1.5	69.0	0.74	915	0.59	4.0	2.1	2.1	0.0063	13
0.75	90S	# 1LAO 090-6YA...	2.0	71.0	0.72	920	0.79	5.0	2.3	2.3	0.0095	17
1.1	90L	# 1LAO 096-6YA..	2.9	75.0	0.71	930	1.2	5.0	2.5	2.5	0.0122	19
1.5	100L	# 1LAO 106-6YA..	3.5	76.0	0.78	950	1.5	4.0	2.0	2.3	0.0269	29
2.2	112M	1LAO 113-6YA..	4.9	79.5	0.78	940	2.3	5.0	2.0	2.3	0.0467	39
3.7	132S	1LAO 131-6YA..	7.6	82.5	0.82	950	3.8	4.5	1.9	2.2	0.0826	58
5.5	132M	1LAO 134-6YA..	10.9	84.5	0.83	945	5.7	5.0	2.0	2.3	0.1156	66

415V, Star connected

All values subject to tolerance as per IS 325

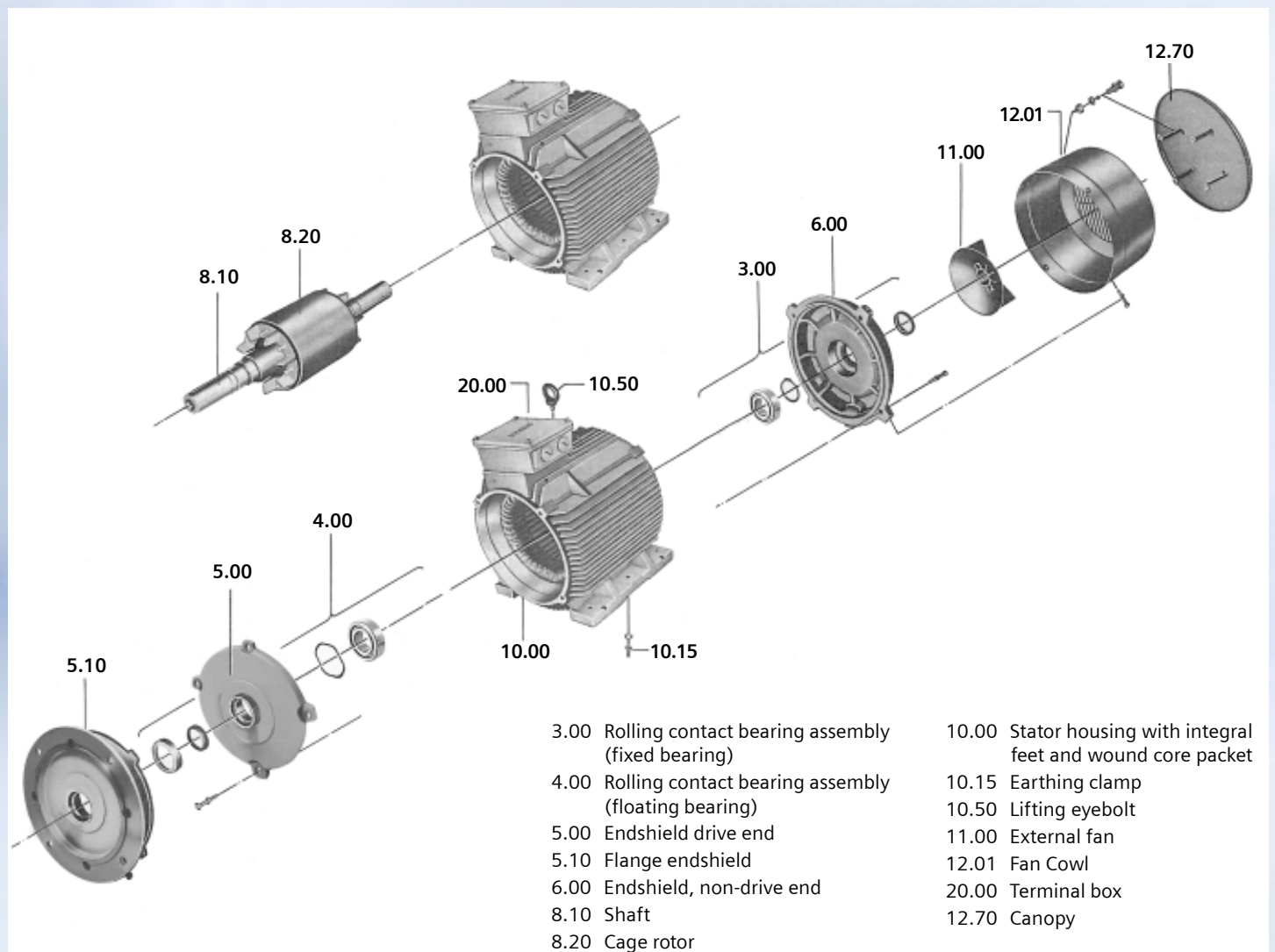
Order No Suffixes

Motor Type	Last place but one : Figure denoting voltage		Last place : Figure denoting construction						
	415V, 50Hz Standard V and F variation	* Other Voltage and/or Frequency (& voltage and frequency variation)	IMB3	At additional price					
				IMB5	IMV1 without canopy	IMV1 with canopy	IMB14	IMB34	IMB35
1LAO 063 to 096	8	9	0	1	1	4	2	7	6
1LAO 106 to 134	8	9	0	1	1	4	2	7	6

Special Designs

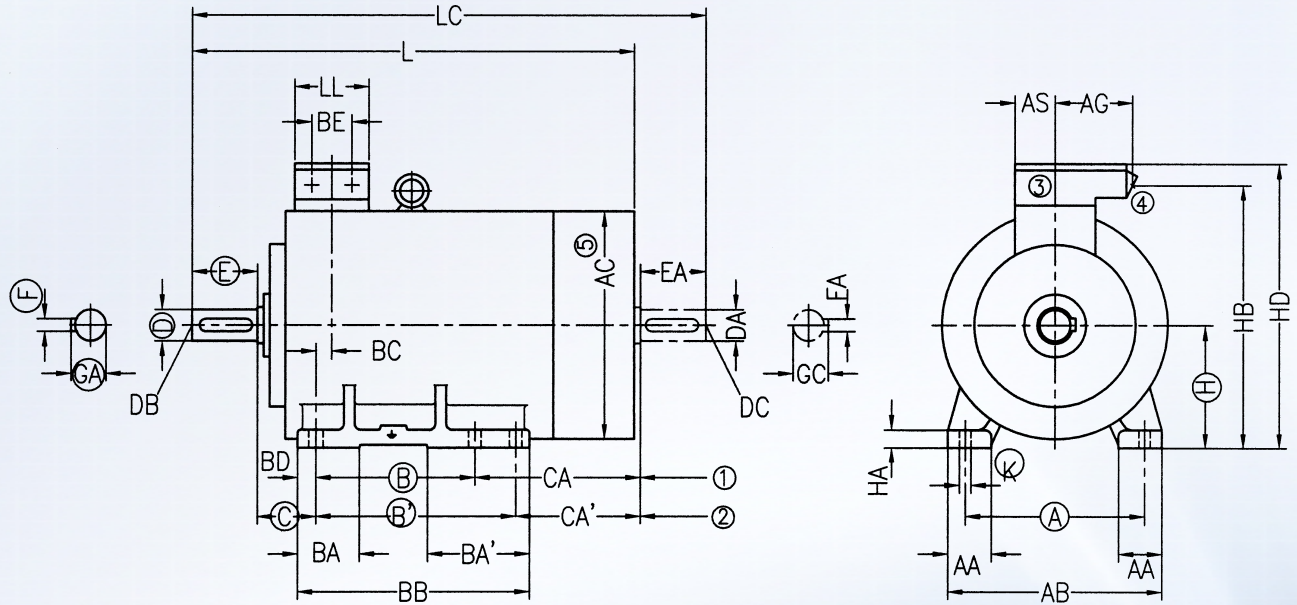
The following special features/accessories can be provided on the motors, on request-

- Non-standard output
- Non-Standard voltage and/or frequency
- 3 numbers PTC thermistors for trip
- Anticondensation heaters - Frame 112 and 132 only
- Epoxy coating on winding overhangs
- Non-standard paint shade
- Epoxy based paint
- Unpainted, only with primer
- Variable speed drive motor
- Standard double shaft extension
- Side mounted terminal box - Frames 90, 100,112 and 132 only
- Non-standard ambient - upto 55°C
- Additional name plate
- Cast Iron external fan
- Fan cowl with Canopy or clean flow fan cowl
- Fan cowl without screen and with canopy



Note: The graphic displayed here is solely for the purpose of explanation. The actual product may be different in appearance.

Dimensions in mm



- ① B is valid in all frames
- ② B' & CA' are valid for 90 frame only 90S: B=100 & CA=128, 90L: B'=125 & CA'=103
- ③ Terminal box can be rotated in steps of 90°
- ④ Conduit entry 1x3/4" for frame size 63-90 & 2x1" for frame size 100-132, as per IS:1653
- ⑤ Measured over bolt heads
- ⑥ Shaft extension as per IS:1231

Mechanical Dimensions [Foot Mounted Motors (IMB3)]

Frame Size	A	AA	AB	AC	AG	AS	B	BA	BA'	BB	BC	BD	BE	C	CA	H	HA
63	100	27	122	132	44.5	44.5	80	26	26	102	19.5	11	-	40	70	63	6
71	112	28	134	148	44.5	44.5	90	26	26	112	15.5	11	-	45	77	71	7
80	125	29	150	168	44.5	44.5	100	30	30	124	15.5	12	-	50	96	80	9
90S/L	140	32	168	190	44.5	44.5	②	32	57	149	23.5	12	-	56	②	90	10
100L	160	43	200	208	82	50	140	46	46	180	25.5	20	40	63	117	100	14
112M	190	52	230	233	82	50	140	47	47	180	19	20	40	70	134	112	15.5
132S	216	53	256	274	82	50	140	46	46	180	12	20	40	89	149	132	16
132M	216	53	256	274	82	50	178	46	46	218	12	20	40	89	149	132	16

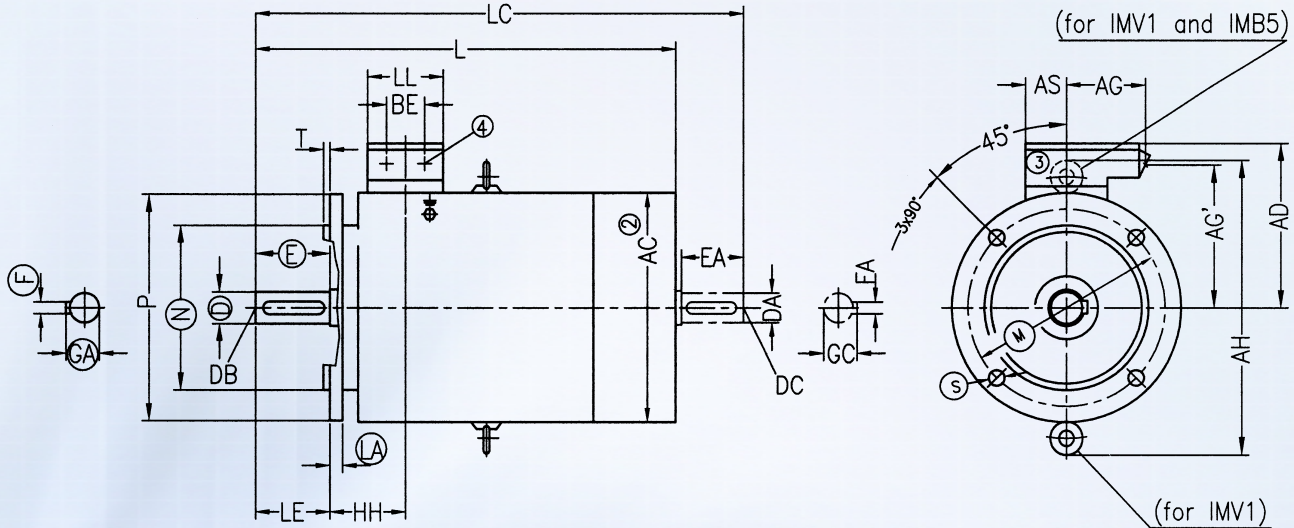
Frame Size	HB	HD	K	L	LC	LL	Shaft Extension									
							Drive End					Non-drive End				
							D	DB	E	F	GA	DA	DC	EA	FA	GC
63	140.5	169	7	208	236	89	11	M4x9	23	4	12.5	11	M4x9	23	4	12.5
71	157	186	7	240	272	89	14	M5x12	30	5	16	14	M5x12	30	5	16
80	176	204	10	282	326	89	19	M6x16	40	6	21.5	19	M6x16	40	6	21.5
90S/L	194.5	223	10	326	374	89	24	M8x20	50	8	27	19	M6x16	40	6	21.5
100L	224.5	256	12	373	430	112	28	M10x24	60	8	31	24	M8x20	50	8	27
112M	249.5	281	12	398	454	112	28	M10x24	60	8	31	24	M8x20	50	8	27
132S	289	320	12	452	538	112	38	M12x28	80	10	41	38	M12x28	80	10	41
132M	289	320	12	490	576	112	38	M12x28	80	10	41	38	M12x28	80	10	41

Definitive Dimensions:

A, B, B', C, H, K, D, E, F, GA are binding dimensions for all standard motors.

All other dimensions are subject to change. For valid dimensions, please contact Regional Office in your region

Dimensions in mm



① Shaft extension as per IS:1231

② Measured over bolt heads

③ Terminal box can be rotated in steps of 90°

④ Conduit entry 1x3/4" for frame 63-90 &

2x1" for frame size 100-132, as per IS:1653

⑤ Flange as per IS:2223

Mechanical Dimensions [Flange Mounted Motors (IMB5)]

Frame Size	AC	AD	AG	AG'	AH	AS	BE	HH	L	LC	LE	LL
63	132	106	44.5	77.5	–	44.5	–	59.5	208	236	23	89
71	148	115	44.5	86	–	44.5	–	60.5	240	272	30	89
80	168	124	44.5	96	–	44.5	–	65.5	282	326	40	89
90S/L	190	133	44.5	105	246	44.5	–	79.5	326	374	50	89
100L	208	156	82	125	270	50	40	88.5	373	430	60	112
112M	233	169	82	138	306	50	40	89	398	454	60	112
132S	274	188	82	157	350	50	40	101	452	538	80	112
132M	274	188	82	157	350	50	40	101	490	576	80	112

Frame Size	Shaft Extension										Flange						
	Drive End					Non-drive End					⑤ Number	LA	M	N	P	S	T
	D	DB	E	F	GA	DA	DC	EA	FA	GC							
63	11	M4x9	23	4	12.5	11	M4x9	23	4	12.5	F115B	9	115	95	140	10	3
71	14	M5x12	30	5	16	14	M5x12	30	5	16	F130B	9	130	110	160	10	3.5
80	19	M6x16	40	6	21.5	19	M6x16	40	6	21.5	F165B	10	165	130	200	12	3.5
90S/L	24	M8x20	50	8	27	19	M6x16	40	6	21.5	F165B	10	165	130	200	12	3.5
100L	28	M10x24	60	8	31	24	M8x20	50	8	27	F215B	11	215	180	250	15	4
112M	28	M10x24	60	8	31	24	M8x20	50	8	27	F215B	11	215	180	250	15	4
132S	38	M12x28	80	10	41	38	M12x28	80	10	41	F265B	12	265	230	300	15	4
132M	38	M12x28	80	10	41	38	M12x28	80	10	41	F265B	12	265	230	300	15	4

Definitive Dimensions:

M, N, S, D, E, F, GA and LA are binding dimensions for all standard motors.

All other dimensions are subject to change. For valid dimensions, please contact Regional Office in your region

Your Partners

Sales offices:

- Ahmedabad** - 380009
1st Floor, Shanti Chamber,
Terapanth Marg, Opp. Dinesh Hall
Near I.T. Cross Road, Navrangpura
☎ : +91 79 27546803, 27546172
Fax: +91 79 27546711
 - Bangalore** - 560001
1st Floor, Jyothimahal, #49, St. Marks Road
☎ : +91 80 22042000
Fax: +91 80 22224131, 41120735
 - Chandigarh** - 160019
SCO - 188-190, 2nd Floor,
Sector 34A, Gurunanak Complex
☎ : +91 172 2666189, 2666190
Fax: +91 172 2666654
 - Chennai** - 600034
4, Mahatma Gandhi Road
☎ : +91 44 28334000
Fax: +91 44 28334088
 - Coimbatore** - 641018
7th Floor, East Wing, Global Towers
1057, Avinashi Road
☎ : +91 422 4336300
Fax: +91 422 4336310
 - Hyderabad** - 500004
5-9-19, Lakshmi Narsinh Estate, 4th Floor
Secretariat Road, Opp. Secretariat, Saifabad
☎ : +91 40 23482500 (10 Lines)
Fax: +91 40 23243145 / 23243146
 - Kolkata** - 700042
43 Shanti Palli, R B Connector, Eastern Metropolitan Bypass
☎ : +91 33 24449000, 24428641-47
Fax: +91 33 24449010 / 13
 - Lucknow** - 226001
28/45, Ashok Marg, Post Box No. 246, U.P.
☎ : +91 522 4031000, 4031039
Fax: +91 522 4031019
 - Mumbai** - 400018
130, Pandurang Budhkar Marg, Worli
☎ : +91 22 24987000-02
Fax: +91 22 24987312
 - Nagpur** - 440010
5th Floor, Landmark Building, Ramdas Peth
☎ : +91 712 6633000
Fax: +91 712 6633111
 - New Delhi** - 110002
4A, Ring Road, I.P. Estate
☎ : +91 11 42995000-09
Fax: +91 11 42995030
 - Pune** - 411016
Tower B / 701 - 705, ICC Trade Tower
403A, Senapati Bapat Road
☎ : +91 20 2570 6000
Fax: +91 20 2570 6060
- ## Territory managers :
- Aurangabad**
Mobile: +91 9766316446
E-mail: siemens.aur@gmail.com
 - Bareilly** - 243001
Flat no. T1, 129, Civil Lines
Mobile: +91 9897019061
E-mail: siemens.bly@gmail.com
 - Baroda** - 390007
1st Floor Vaniya Bhavan, Race Course Road
☎ : +91 265 2325810 / 12, 6692110
Mobile: +91 98255 06963
E-mail: sreejaganath.mohanta@siemens.com
 - Belgaum** - 590005
Clo "Shrihari", 1st Floor, Plot No. 61
5th Cross, Bhagya Nagar
☎ & Fax: +91 831 2495156
Mobile: +91 9880290835
E-mail: m.imran@siemens.com
 - Bhilai** - 490001
Clo. Mr. S. H. Siddiqui
Sector -1, Street - 9, Quarter No.1A
Mobile: +91 9826127525
E-mail: siemens_chg@sify.com
 - Bhubaneswar** - 751002
109, Harapriya Apartment
Vivekananda Marg
☎ : +91 674 3200627
Mobile: +91 9937009749
E-mail: anirban.aditya@gmail.com
 - Cochin** - 682016
K.G. Oxford Business Centre
39/4609, 3rd Floor
Sreekanth Road, Ravipuram
☎ : +91 484 4028611/22/33/44
Fax: +91 484 2371564
E-mail: satish.prabhu@siemens.com
 - Durgapur** - 713216
93, Pranabanda Avenue, 1st Floor
SAIL Housing Complex, City Center
☎ : +91 343 2605286
Mobile: +91 9830185007
E-mail: sourav.paul_dgp@yahoo.com
 - Gurgaon** - 122001
117-C, First Floor, Sector-30
Behind Jalvayu Vihar
Mobile: +91 99710 91588
Email: siemens.ggn@gmail.com
 - Guwahati** - 781003
G1, Hill View Apartment
Navagraha Path, Chenikuthi Hill Side
☎ : +91 361 2663988
Mobile: +91 9864037562
E-mail: amarnath.karmakar@vsnl.net
 - Hardwar** - 249407
758, 1st Floor, Model Colony
Awasthi, Jwalapur, Uttaranchal
☎ & Fax: +91 1334 265491
Mobile: +91 9897070133
E-mail: siemens_hwd@datainfosys.net
 - Haryana** - 121006
House No.237, sector 8, Faridabad
☎ : +91 9990265226
Mobile: +91 9873696350
E-mail: ramit_siemens@yahoo.co.in,
ramit.mehra@siemens.com
 - Indore** - 452001
521 Suniket Apartments
Shri Nagar Extension, Main Khajrana Road
Mobile: +91 98266 41970
E-mail: siemens_indore@yahoo.com
 - Jaipur** - 302006
6, Park Street, Opp. Pink City Petrol Pump
M.L.Road, Rajasthan
☎ : +91 141 2370274, 2377956
Fax: +91 141 2370482
Mobile: +91 9829244313
E-mail: siemens_jpr@dil.in
 - Jalandhar** - 144002
635L, 1st Floor, Model Town
☎ & Fax: +91 181 2460547
Mobile: +91 9915526636
E-mail: siemensjal@vsnl.net
 - Jamshedpur** - 831005
1511, Kirthar Apartment
Vijaya Heritage, Uliyan, Kadma
☎ : +91 657 6451637
Mobile: +91 99343 11352
E-mail: siemens.jsr@rediffmail.com
 - Kanpur** - 208001
Flat No.19-B, 4th Floor, Prabhu Vatika
7/109, Swarup Nagar, U.P.
☎ & Fax: +91 512 2423348
Mobile: +91 9839102434
E-mail: siemens_knp@satyam.net.in
 - Kolhapur** - 416001
B-7, Mahagaonkar Complex
1147/E, Rajaram Road, Opp. Kamala College
☎ : +91 231 2536626
Mobile: +91 9822558876
E-mail: amol.pandit@siemens.com
 - Ludhiana** - 141009
H.No. 3127, First Floor, Sector 38
Urban Estate, Chandigarh Road
Mobile : 09876047929
E-mail : siemens_ldh@satyam.net.in
 - Ludhiana** - 141004
House No. 281, 1st Floor, E Block, B.R.S. Nagar
Mobile: +91 9872000936
E-Mail: siemens.ludhiana@sify.com
 - Ludhiana** - 141004
House No. 766, 1st Floor
Sector 39, Chandigarh Road
Mobile: +91 9815130172
E-Mail: siemens_ldh_ss@sify.com
 - Madurai** - 625006
Arun Illam, Plot No 4, Lion City, Thirunagar
☎ & Fax: +91 452 2484085
Mobile: +91 9443369375
E-Mail: k.shankar@siemens.com
 - Nashik** - 422101
8B, Shubhmangal Apartment
Chavan Mala, Nasik Road
Mobile: +91 9822193204
E-mail: siemens.nsk@gmail.com
 - Pondicherry** - 605001
32, Second Floor, St. Theresa Street
☎ & Fax: +91 413 4500101
Mobile: +91 9840472727
E-mail: elankumarak.pandian@siemens.com
 - Raipur** - 492007
Flat no-103, First Floor, Block-B, Ship Enclave
Near I A S Colony, Shankar Nagar
Mobile: +91 9425057945
E-mail: siemens@sancharnet.in
 - Rajkot** - 360005
Maushmi, Nr. Sadguru Vandana Dham-II
Opp. Raiya Telephone Exchange
Mobile: +91 98258 18864
E-mail: vinod_naik_sl@yahoo.co.in
 - Ranchi** - 834001
Flat No. 403, Rishab Towers
Near Line Tank, Behind Firayalals
☎ : +91 651 6450812
Mobile: +91 99343 52756
E-mail: siemens_bokaro@yahoo.co.in
 - Rourkela** - 769004
T-15 Civil Town
☎ : +91 661 2400880
Mobile: +91 9437041724
E-mail: ganguly_sl@yahoo.co.in
 - Renukoot** - 231217
Sector 1/1653, Plant II Colony
Hindalco Industries Ltd.
P.O. Murdhawa, Distt. Sonbhadra, U.P.
Mobile: +91 9838007897
E-mail: siemens_upeast@sify.com
 - Tiruchirappalli** - 620017
T3, III rd Floor, Vishranthi Daffodils Apartments
Opp: Friends Eye Hospital, Puthur
☎ : +91 431 4030390
Fax: +91 431 4030390
Mobile: +91 9444911221
E-mail: Akhilesh.Nair@siemens.com
 - Udaipur** - 313001
Oasis Park, Flat No.303
P.P. Singhal Marg, Ambavgarh
☎ : +91 294 2430345
Mobile: +91 9829039120
E-mail: siemens@datainfosys.net
 - Vapi** - 396195
Flat No. 302, Samrajya IV
Royal Residency, Charwada Road
☎ : +91 260 6451156
Mobile: +91 98251 47957
E-Mail: siemens_vapi@sancharnet.in
 - Vijayawada** - 520010
G-2, Shreya Towers, Moghalrajapuram
Near Jammichettu Centre
☎ : +91 866 6629933
Mobile: +91 9866463639
E-mail: santosh.p@siemens.com
 - Visakhapatnam** - 530003
B4, Mount Moriah Residency, Waltair Uplands
☎ : +91 891 6637344
Fax: +91 2519762
Mobile: +91 98492 12555
E-mail: ksv.prasad@siemens.com

Siemens Ltd.

Automation & Drives - Motors

Thane Belapur Road

Thane 400601

Fax: +91 22 27623727

E-mail: motors.in@siemens.com

MOT-02-120-047

This replaces MOT-02-120-044

Customer Care Toll free no. 1800 220 987. Email: adscs.india@siemens.com

Product upgradation is a continuous process. Hence, data in this booklet is subject to change without prior notice. For the latest information, please get in touch with our Sales Offices.

Expert

